

Contra Costa County

Reentry Planning Initiative

M A Y 1 2 , 2 0 1 0

Visit our website

www.cocoreentry.org

For more information
and to sign up for the
next Reentry Planning
Initiative meetings

All meetings from 9:30
AM to noon.

May 26th

1275 Hall Avenue
Richmond, CA 94804

June 16th

651 Pine Street
Martinez, CA 94553

INSIDE THIS ISSUE:

Programs and 2
Services

Infrastructure 3

Process Over- 4
view &
Contacts

April Reentry Planning Initiative Meeting

On April 28th the Contra Costa Reentry Planning Initiative continued to the design and development of a reentry system for the county. This meeting allowed the two workgroups to further develop their thinking around the needed programs and services as well as the infrastructure for a more coordinated reentry system in Contra Costa County. The Taskforce then reviewed the proposals from the workgroups and discussed next steps.

In addition, attendees confirmed two new members of the Taskforce: Dee Reyes and Leonard Rubio.

Below is a summary of the outcomes from the two Workgroups and the Task Force's discussion.

1. The **Programs & Services Workgroup** conducted a preliminary gap analysis by identifying what services already exist, who they serve and began to identify where the gaps might exist.
2. The **Infrastructure Workgroup** developed an initial infrastructure design for the county to facilitate coordination and communication among the various reentry stakeholders in Contra Costa County.
3. The **Task Force** reviewed presentations from the two work groups and discussed next steps. There was a general consensus that the focus of the Reentry Planning Initiative should be to develop and solidify the infrastructure component by the end of June.
4. The **Mission and Values Sub-Committee** has nearly completed their revisions of the mission and values statement and will bring them to the next Planning Initiative meeting.
5. The **Strategic Planning Sub-Committee** was not able to meet prior to this meeting but will either convene a meeting or work independently on the synthesizing the information from the workgroups and the Task Force.

Programs and Services Workgroup

The programs and services workgroup identified the critical services at each phase of the reentry process. The services that they have listed below are the results of this discussion from the March 17th meeting and that were collected throughout the month of April. Based on this listing the Programs and Services Workgroup began to identify the providers that offer these services. To see a list of the current providers on this list and to add new providers to this list please visit www.cocoreentry.org

Arrest and Sentencing

- Family/Children Services
- Service to connect and support family and arrested individual
- Intake/Assessment process for both family and individual

Incarceration

- Family/Children Services and Support
- Visitation schedule/case manager
- Case manager to create an incarceration plan with a list of services and programming that would be beneficial, including health services needed.
- Substance abuse treatment
- Pre-release planning
- Education
- Access to health services
- Financial and job readiness for release
- Relevant job training for local industries and employers

Pre-release

- Resource fair for programs and services available when the reenter
- Available housing if they aren't returning home
- Identify medical home if needed
- Pre-release planning that covers housing, substance abuse treatment, spiritual needs, employment, and family, friends or community support network.
- Case manager for family to prepare them for the individual coming home
- Updates/training on changes in the community/world they are reentering into
- Meeting with promotora or health conductor
- Job readiness workshops – including resume, filling out applications, interview skills, conflict resolution skills, and how to leave properly,
- Meeting with Parole to discuss placement – home town isn't always the best option

Release

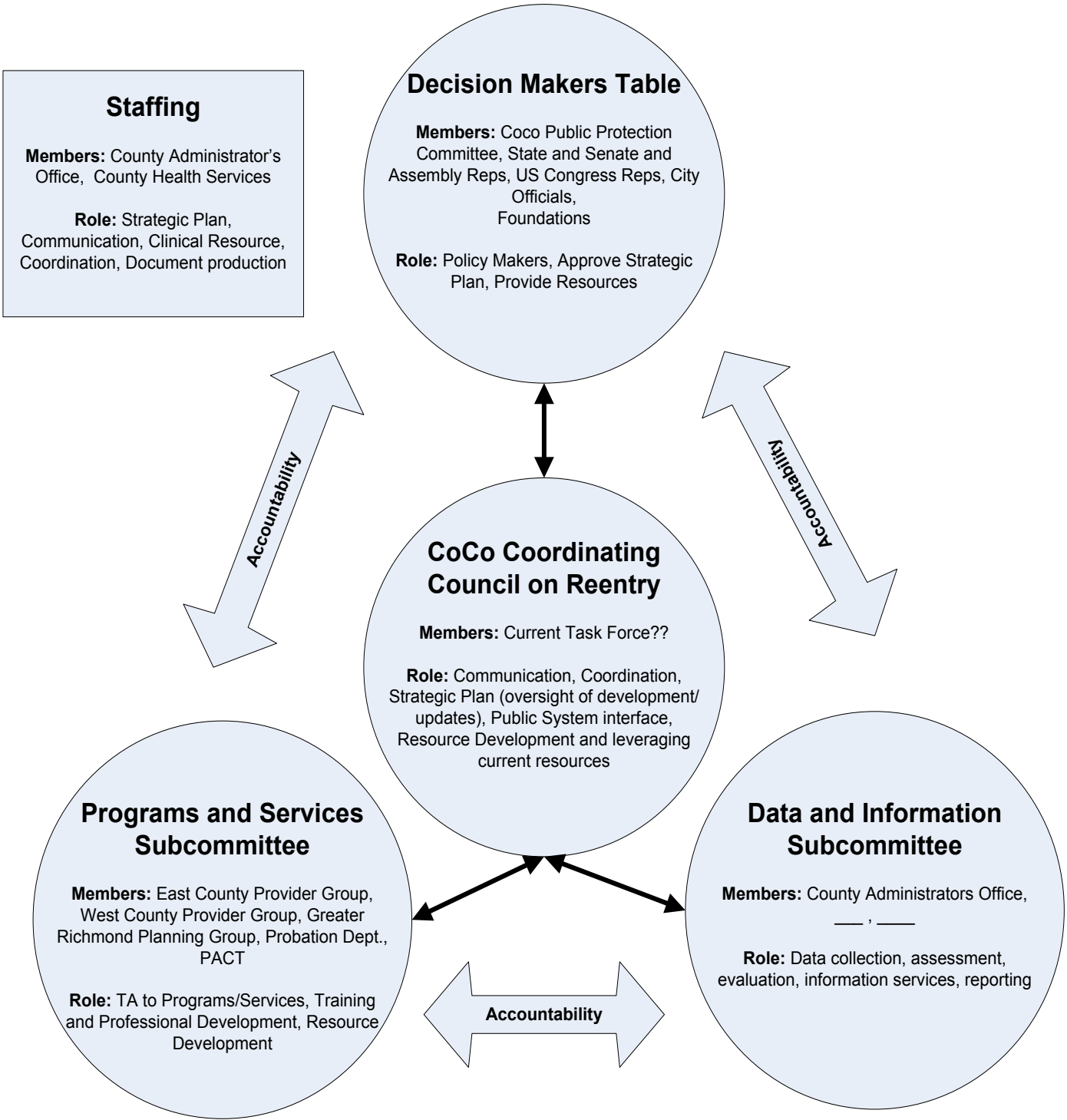
- PACT and welcome home agency that works with the pre-release plan
- Support Liaison (case manager) to navigate services
- Family support
- Conductors & promotoras
- IDs, SS Card
- Computer access
- Financial assistance
- Court/legal assistance
- Goal planning, life coaching, follow through
- Counseling
- Employment assistance

Reentry/Reintegration

- PACT
- Medical home
- Connection to a faith community
- Connection to employers willing to employ formerly incarcerated
- Housing
- Support groups with other formerly incarcerated
- Health conductors/promotoras
- Community service opportunities
- Mentorship
- Employment/job placement services
- Substance abuse treatment

Infrastructure Workgroup

The infrastructure workgroup developed an initial infrastructure design for the county. This basic framework will continue to develop before our next meeting. For updates please check the website www.cocoreentry.org.



For More Information Contact

www.cocoreentry.org

Bill Heiser
Program Coordinator
 Urban Strategies Council
 (510) 893-1375
billh@urbanstrategies.org

Devone Boggan—Richmond
Office of Neighborhood Safety
 (510) 621-1219 /
devone_boggan@ci.richmond.ca.us

David Fraser—Office of
Supervisor Federal Glover
 (925) 427-8138 /
david.fraser@bos.cccounty.us

www.cocoreentry.org

CoCo Reentry Planning Initiative Outcome Matrix March-June 2010

	March 17, 2010 9:30am-12:00pm	April 28, 2010 9:30am-12:00pm	May 26, 2010 9:30am-12:00pm	June 16, 2010 9:30am-12:00pm
Meeting location	1875 Arnold Drive, Martinez, CA 94553	East County	1275 Hall Avenue Richmond, CA 94804	651 Pine Street Martinez, CA 94553
General Meeting Outcomes	Create Workgroups Adopt Task Force Composition Adopt Values and Mission Statement	Adoption of goals and objectives of Reentry Strategic Plan Adoption of component parts Adoption of ideal service provision at each phase of reentry process	Adoption of performance measures	Adoption of final plan
Task Force - Strategic Planning sub-committee	Goals and Objectives for strategic plan	Final Outline of Reentry Strategic Plan Overview of “Reentry in Contra Costa County”	Logic Model Implementation Schedule Performance Measures Communications Strategy	
Workgroup - Infrastructure	Identify functions of reentry infrastructure Identify existing bodies and the functions that they perform	Organizational chart of reentry infrastructure Description of each component and process for coordination and communication	Develop Implementation Plan for establishing the proposed infrastructure Identify performance measures for tracking progress	
Workgroup - Programs and Services	Description of program and service needs at each phase of reentry process	Develop process for data-driven prioritization of service and program needs, (gap analysis) Identify process for networking and professional development to address priority needs	Develop implementation plan for ongoing prioritization of needs and professional development Identify performance measures and benchmarks to track progress	