

# Contra Costa County

## Reentry Planning Initiative

JUNE 08, 2010

Visit our website

[www.cocoreentry.org](http://www.cocoreentry.org)

For more information  
and to sign up for the  
next Reentry Planning  
Initiative meetings

June 16th

9:30 AM — 12:00pm

651 Pine Street  
Martinez, CA 94553

## May Reentry Planning Initiative Meeting

On May 26th the Contra Costa Reentry Planning Initiative continued to the design and development of a reentry system for the county. This meeting allowed the two workgroups to further develop their thinking around the needed programs and services as well as the infrastructure for a more coordinated reentry system in Contra Costa County. The Taskforce then reviewed the proposals from the workgroups and discussed next steps.

In addition, the Contra Costa Reentry Planning Initiative voted renamed the collaborative and will now be known as the *Contra Costa County Reentry and Reintegration Collaborative*.

Below is a summary of the major topics discussed by the two Workgroups and the Task Force.

### INSIDE THIS ISSUE:

Programs and Services 2

Mission, vision and values 2

Infrastructure 3

Process Overview & 4

**Programs & Services Workgroup:** The programs and services workgroup identified the critical issues that they felt service providers needed to have addressed. The discussion generated a list of questions that the group would like to see answered and a prioritization of the issues that they felt were most pressing. (Page 2)

**Infrastructure Workgroup:** The Infrastructure Workgroup continued to develop a countywide reentry infrastructure. Using the design from last meeting as a starting point participants began articulating more of the role and functions of each committee within the proposed infrastructure (Page 3)

**Task Force** reviewed presentations from the two work groups and discussed next steps. The Mission, Vision and Values Sub-Committee also presented a final version of the Mission and Values Statement which was adopted by the Task Force with a few minor edits (Page 2).

# Program and Services Workgroups

## Priorities

1. Supply/Demand Analysis
2. Resource and Referral System
3. Case Management model (“Going Home, Staying Home” model)
4. Identification of a point person for coordination of effort
5. Need planning with infrastructure to develop coordination and communication systems

## Questions to be Addressed

- How will East and West County providers work together?
- How do we get more providers involved?
- How to complete supply/demand?
- How to prioritize particular service needs/gaps?
- Capacity building or organizations?
- Relationship with parole department?
- Leadership and community of purpose?
- How to incorporate best practices?

## Mission, Vision and Values Statement

### *Contra Costa County Reentry and Reintegration Collaborative*

#### **MISSION STATEMENT**

The Contra Costa Reentry and Reintegration Collaborative (CCCRRC)’s primary mission is to engage and support individuals, families, and communities in transitioning formerly incarcerated individuals to become active and impactful members of their communities. CCCRRC will accomplish this mission through the development and support of necessary public policy, public safety, community awareness and services.

Reentry services are part of a continuum that begins at the point an individual enters the justice system and continues through successful transition. Formerly incarcerated individuals and others directly affected by the criminal justice system are involved with the CCCRRC, providing input on prevention services, service delivery, advocacy, policy issues and service delivery that encourages community integration, reintegration and recidivism reduction.

#### **VISION STATEMENT**

Individuals released from incarceration into communities in Contra Costa County will become part of an integrated and supportive service network comprised of community-based organizations, government and public agencies and the broader community. This network will jointly create a pathway for the successful transition of formerly incarcerated individuals.

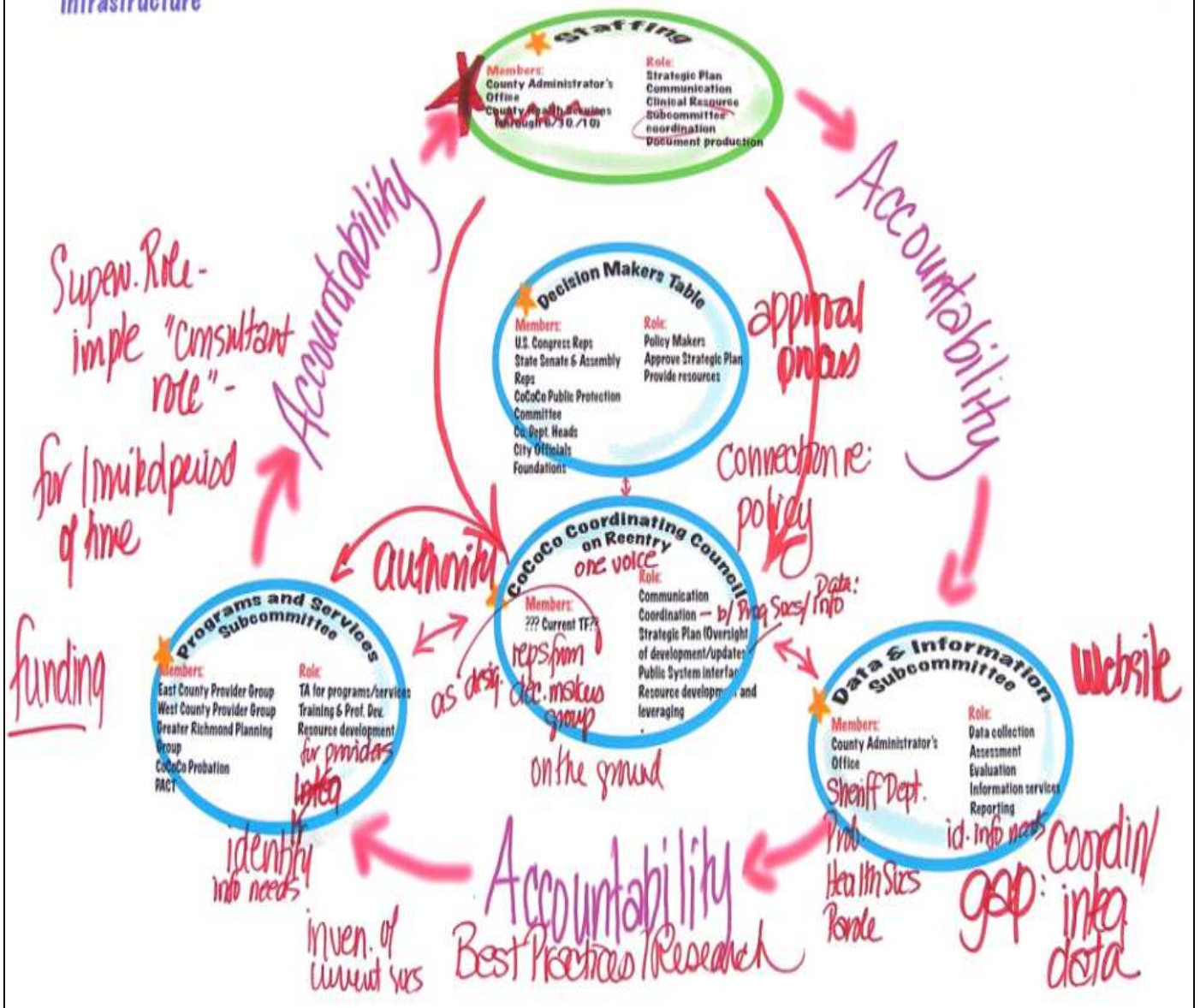
#### **PRINCIPLES and VALUES**

The Contra Costa County Reentry and Reintegration Collaborative is guided by the following principles and values:

- CCCRRC seeks to provide increased awareness about the value of formerly incarcerated individuals and their loved ones to their communities.
- Individuals are more likely to experience success when they are part of a supportive, integrated system.
- Reentry and reintegration transition begins while the individual is incarcerated.
- Best practices, while leaving room for innovation, are utilized when developing programs and policies.
- Collaboration, coordination, information, and communication are key to the Contra Costa County Reentry and Reintegration Collaborative’s success and sustainability.
- The good of the community comes before one’s self and/or organization

# Infrastructure Workgroup

## CONTRA COSTA REENTRY PLANNING INITIATIVE Infrastructure



## For More Information Contact

[www.cocoreentry.org](http://www.cocoreentry.org)

**Bill Heiser**  
**Program Coordinator**  
 Urban Strategies Council  
 (510) 893-1375  
[billh@urbanstrategies.org](mailto:billh@urbanstrategies.org)

**Devone Boggan—Richmond Office of  
 Neighborhood Safety**  
 (510) 621-1219 /  
[devone\\_boggan@ci.richmond.ca.us](mailto:devone_boggan@ci.richmond.ca.us)

**David Fraser—Office of  
 Supervisor Federal Glover**  
 (925) 427-8138 /  
[david.fraser@bos.cccounty.us](mailto:david.fraser@bos.cccounty.us)

**June 16th**  
**9:30 AM — 12:00pm**  
**651 Pine Street**  
**Martinez, CA 94553**  
[www.cocoreentry.org](http://www.cocoreentry.org)

## CoCo Reentry Planning Initiative Outcome Matrix March-June 2010

	March 17, 2010 9:30am-12:00pm	April 28, 2010 9:30am-12:00pm	May 26, 2010 9:30am-12:00pm	June 16, 2010 9:30am-12:00pm
<b>Meeting location</b>	1875 Arnold Drive, Martinez, CA 94553	East County	1275 Hall Avenue Richmond, CA 94804	651 Pine Street Martinez, CA 94553
<b>General Meeting Outcomes</b>	Create Workgroups Adopt Task Force Composition Adopt Values and Mission Statement	Adoption of goals and objectives of Reentry Strategic Plan Adoption of component parts Adoption of ideal service provision at each phase of reentry process	Adoption of performance measures	Adoption of final plan
<b>Task Force - Strategic Planning sub-committee</b>	Goals and Objectives for strategic plan	Final Outline of Reentry Strategic Plan Overview of "Reentry in Contra Costa County"	Logic Model Implementation Schedule Performance Measures Communications Strategy	
<b>Workgroup - Infrastructure</b>	Identify functions of reentry infrastructure Identify existing bodies and the functions that they perform	Organizational chart of reentry infrastructure Description of each component and process for coordination and communication	Develop Implementation Plan for establishing the proposed infrastructure Identify performance measures for tracking progress	
<b>Workgroup - Programs and Services</b>	Description of program and service needs at each phase of reentry process	Develop process for data-driven prioritization of service and program needs, (gap analysis) Identify process for networking and professional development to address priority needs	Develop implementation plan for ongoing prioritization of needs and professional development Identify performance measures and benchmarks to track progress	